



Munster Avenue, Hounslow, TW4 5BG
Guide Price £599,000

A well presented extended three bedroom semi-detached house situated in this popular residential location with access to local shops and bus routes. The accommodation comprises through lounge, extended modern kitchen/diner and cloakroom, on the first floor three bright and spacious bedrooms and modern family bathroom. Benefits include double glazed windows, central heating, rear garden, driveway providing off street parking to the front and garage accessed via shared driveway. The property, in our opinion, is offered for sale in good decorative order and is offered for sale with no forward chain. Viewings highly recommended.

A partner of
The Guild Of Professional Estate Agents
 with a network of over 700 independent estate agents

Associated Office: 121 Park Lane, Mayfair, London W1K 7AG t 020 7318 7075

Entrance Hallway



Laminate flooring, side aspect double glazed window, radiator, understairs cupboard.

Cloakroom



Low level w/c, wash hand basin with mixer tap and vanity unit below, tiled walls and flooring, heated towel rail.

Through Lounge



Front aspect double glazed window, radiator, spotlights, further radiator, laminate flooring, through to...





Re-Fitted Modern Kitchen



Single drainer stainless steel sink unit with mixer tap and cupboard below, further range of floor and wall units, built-in hob and built-in double oven, space for washing machine, part tiled walls, power points, side aspect double glazed window skylight window, underfloor heating, tiled flooring.

Dining Area



Double glazed door to garden, radiator, power point, skylight window, tiled flooring, spotlights.



First Floor Landing

Side aspect double glazed window, access to loft, doors to rooms.

Bedroom One



Front aspect double glazed window, radiator, laminate flooring.

Bedroom Two



Rear aspect double glazed window, radiator, laminate flooring.

Bedroom Three



Rear aspect double glazed window, radiator, laminate flooring.

Family Bathroom



Modern white suite comprising panel enclosed bath,

wash hand basin with vanity unit below, low level w/c, tiled walls, double glazed window, heated towel rail, tiled flooring.

Outside

Rear Garden



Paved patio area, side access.



Front Garden

Brick driveway with off street parking

Garage

Access via shared driveway.

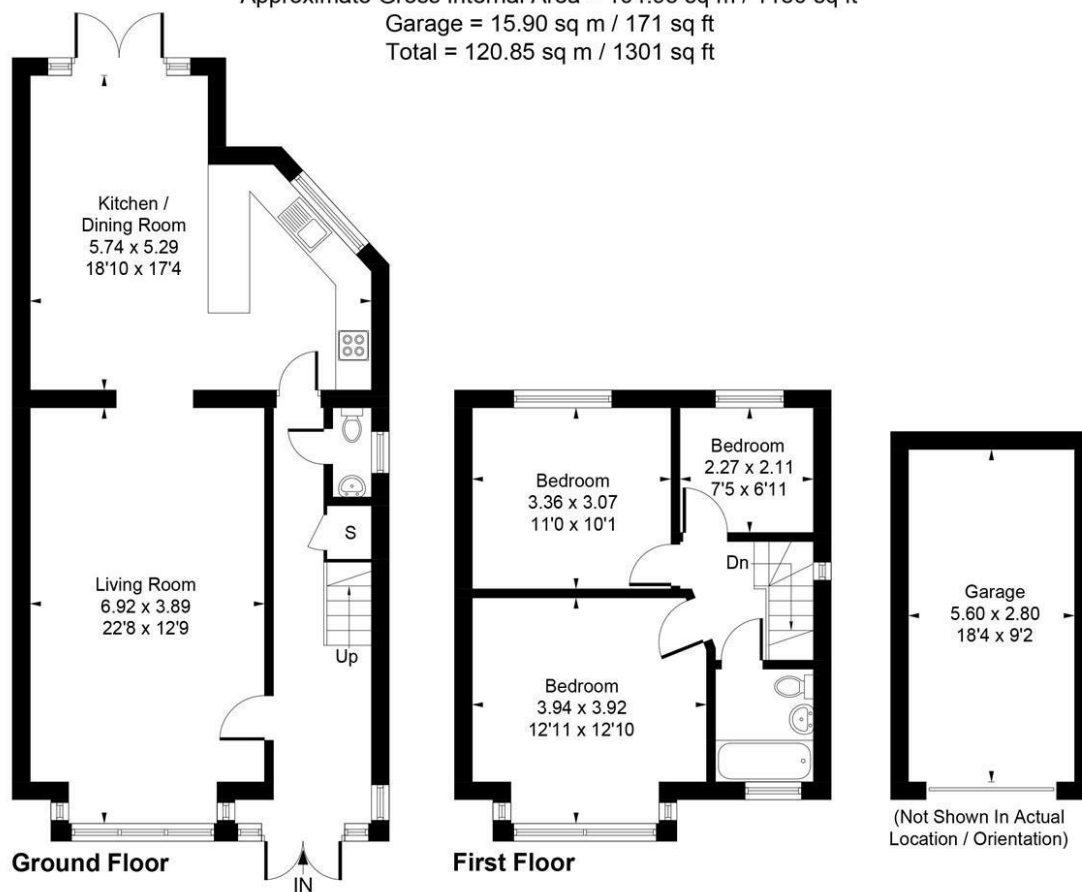


21 Munster Avenue, Hounslow, TW4 5BG

Approximate Gross Internal Area = 104.95 sq m / 1130 sq ft

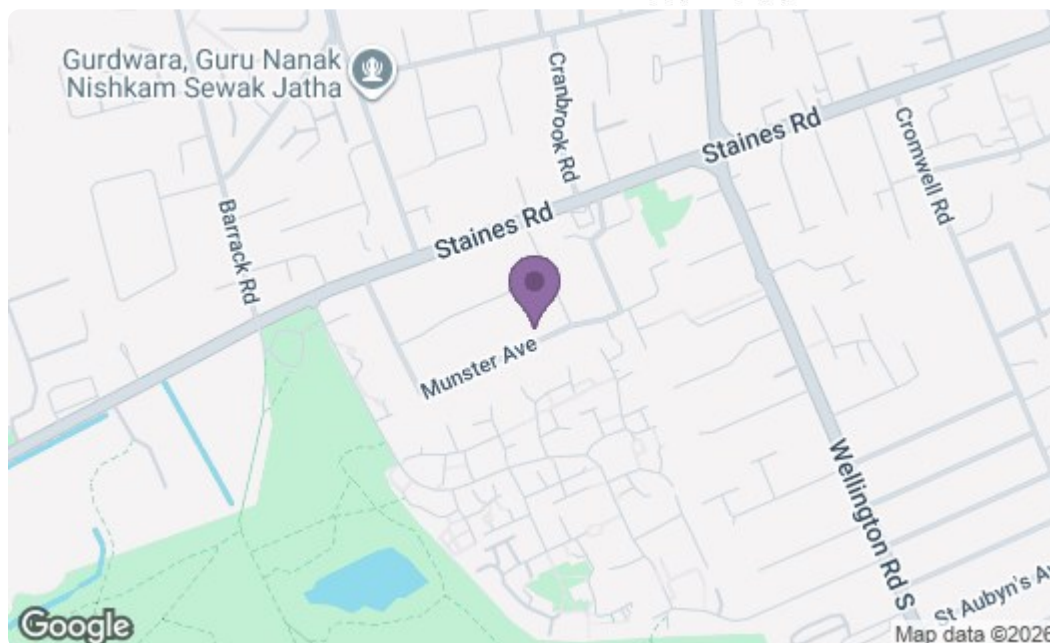
Garage = 15.90 sq m / 171 sq ft

Total = 120.85 sq m / 1301 sq ft



Whilst every attempt has been made to ensure the accuracy of the floor plan contained here, measurements of doors, windows, rooms and any other items are approximate and no responsibility is taken for any error, omission, or mis-statement. This plan is for illustrative purposes only and should be used as such by any prospective purchase.

Produced by jcphotographystudio.com



Energy Efficiency Rating		
	Current	Potential
Very energy efficient - lower running costs		
(92 plus) A		87
(81-91) B		
(69-80) C		
(55-68) D	67	
(39-54) E		
(21-38) F		
(1-20) G		
Not energy efficient - higher running costs		
England & Wales EU Directive 2002/91/EC		
Environmental Impact (CO ₂) Rating		
	Current	Potential
Very environmentally friendly - lower CO ₂ emissions		
(92 plus) A		
(81-91) B		
(69-80) C		
(55-68) D		
(39-54) E		
(21-38) F		
(1-20) G		
Not environmentally friendly - higher CO ₂ emissions		
England & Wales EU Directive 2002/91/EC		

A partner of
The Guild Of Professional Estate Agents
with a network of over 700 independent estate agents

Associated Office: 121 Park Lane, Mayfair, London W1K 7AG t 020 7318 7075